



Simulation-ready North America Datasets for PLEXOS and Aurora

Plug-n-Play Data for Trusted Decision-Making Insights

YOUR MODELS ARE ONLY AS GOOD AS YOUR DATA

Energy Exemplar has invested in creating simulation-ready datasets from public sources so that you can immediately start modeling with confidence.

- *Publicly sourced*
- *Thoroughly documented*
- *Extensively tested and calibrated within the market*
- *Continuously updated*

FASTER START-UP

Dozens of datasets from all corners of the world offer a fast-start for users beginning their modeling journey. Subscribing to Energy Exemplar datasets makes it easy to overlay and maintain proprietary updates.

- *Consistent annual updates*
- *Integrated zonal datasets*
- *Planning and commercial nodal datasets*
- *Visual mapping, load-building and integrated 3D output*

CUT INTERNAL COSTS

Investing in research as well as collecting and transforming data can take a team of people the majority of a year. Energy Exemplar's dedicated data team stays current with the updates of market data, current market assumptions and emerging data sources.

- *Updated when each new public data stream is published*
- *Benchmarked to historic market data to demonstrate the quality of the data*

MAKE INFORMED, RELIABLE DECISIONS

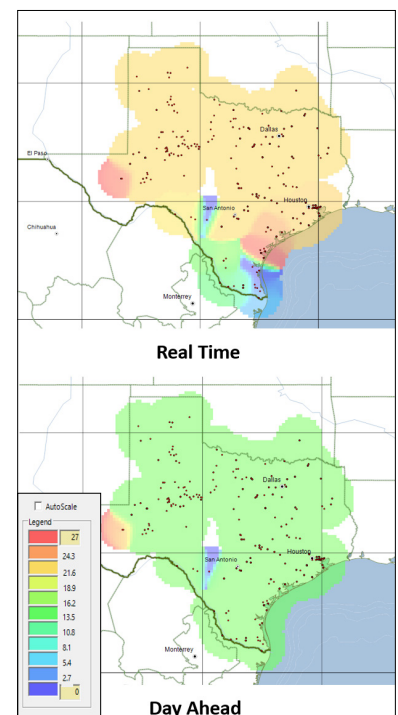
These datasets incorporate the latest industry data from ISOs/TSOs, regional entities and governmental agencies. Both nodal and zonal data is available using the latest information across all interconnects. It's the ideal tool for:

- *20+ year forecasts*
- *Analysis of all zones and regions*
- *Asset valuation*
- *Market analysis (including energy and capacity)*
- *Congestion and risk analysis*
- *Comprehensive resource and constraint modeling mapped to all interconnected zones*

AVAILABLE FOR BOTH PLEXOS & AURORA

North America

- *Zonal: North America, WECC, ERCOT, EIC*
- *Nodal: WECC, ERCOT, EIC*



DATASET DETAILS – NORTH AMERICA

Inclusions:

- 30-year price forecast for 178 areas
- Over 24,000 generators with unique operating characteristics
- Model-driven resource expansion plan
- 38 natural gas hub forecasts with prime over, size and vintage differentiation for plants across the US and Canada
- Plant-specific coal forecasts
- Up-to-date demand forecasts using the latest ISO and other available data
- Solar rating factors for fixed and tracking axis technologies
- Unique hourly wind shapes for 95 wind regions with three unique wind classifications for each configuration
- A detailed set of release notes with each new version of the database
- Mappings of generators to those within other major reports (CELT, Gold Book, CDR, WECC ADS, etc.)
- Detailed monthly hydro shapes with those in the Northwest derived from 80 years of hydro data using the latest Biological Opinion
- Emissions modeling of CO₂, NO_x, SO_x and HG using the latest existing and expected environmental programs

SOURCES

- Power plants are derived using EIA, EPA, ISO and independent research
- Fuel forecasts from ENERFAX, Annual Energy Outlook and Short-Term Energy Outlook by the EIA
- New generator characteristics derived from EIA Table 8.2 and expanded upon through Energy Exemplar analysis
- Transmission links are nodally informed and enhanced using the latest regional reports from WECC, ISOs and other entities
- Hourly demand shapes for each area from using actual data and historical analysis
- Solar rating factors were derived from the NREL System Advisor Model (SAM v2016.3.14)
- Hourly wind rating factors were derived from NREL's Wind Integration National Dataset (WIND) Toolkit
- ISO, EIA, EPA, NERC and FERC data and reports where appropriate

FOR NODAL DATASETS

- Power flow cases from WECC, ERCOT and MMWG for Eastern Interconnect

NODAL AND ZONAL DATASETS PROVIDED FOR (INDIVIDUALLY)

- WECC
- ERCOT
- Eastern Interconnect

General inquiries: info@energyexemplar.com

Customer support: support@energyexemplar.com

ENERGYEXEMPLAR.COM